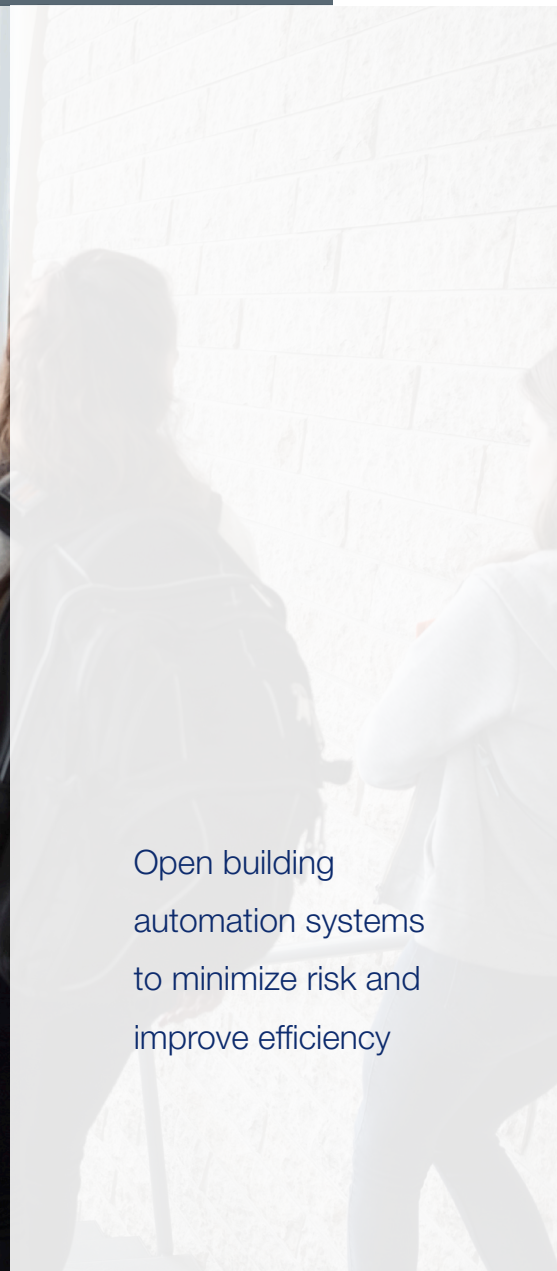
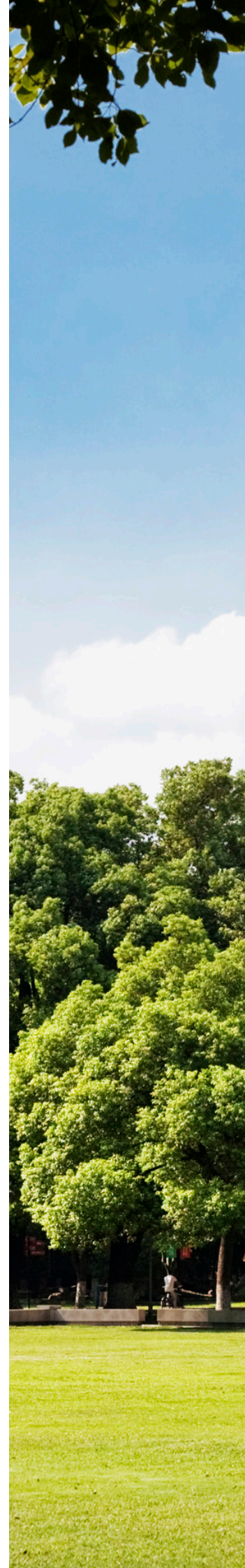


Colleges & Universities

Connected Building Solutions



Open building
automation systems
to minimize risk and
improve efficiency



You're Shaping the Future. Are You Equipped for It?

At Distech Controls™, we understand that universities must lead in technology, innovation, and sustainability to foster their students and staff's productivity and performance. Unfortunately, Building Automation Systems have not always kept up with these trends, making you feel locked in while overspending on capital and operating expenses. Whether your occupants are in classrooms, research labs, offices or in athletic facilities, their needs should be met in a variety of ways.

It's Not Just About Entrusting, It's About **Empowering**



Faculty & Staff

Empower teachers to instantly adjust the lighting, temperature, and sunblinds from a classroom podium via a mobile app or a user-friendly wall-mounted touchscreen.



Students

Enjoy more productive, comfortable and safe learning environments with optimal air quality, light and temperature.



Administrators

Create an IOT-connected smart campus of the future that attracts students, while reducing operating costs and energy usage.

Open Systems: The Safest Investment for Your School's Academic Sustainability

Building systems have traditionally been proprietary and not flexible like open systems. Proprietary systems speak different languages, resulting in incomplete visibility, data, and reliability, and leave you tied to one, often expensive, service provider.

In contrast, Distech Controls' commitment to open protocols and industry IT standards, combined with our best-of-breed technology offering, create a sustainable foundation that supports and evolves with your building system's life cycle, and lets you choose from competitive prices in service providers.



Exposure to **CO2** can result in drowsiness, eye irritation, and inability to concentrate. If a ventilation system provides inadequate fresh-air intake, levels of **CO2** in the classroom can rise dramatically during the course of a classroom session.



Die Funktionsweisen (1) Erstellung

Duft
Effekte

ruckprodukt

University of Applied Sciences | Faculty of Business | Department of Business Administration | Institute of Business Administration

$$90,000 \times (80 - 40) = -\$ 3,600,000 \quad CM_{\text{lost}}$$

tropfen \rightarrow
40,000 units

'gained' / lost
lost
lost



Connected Building Solutions

How Connected Building Solutions Help with **Security**

Safety: Inside and Out

Whether in class, residence halls or walkways, BAS occupancy sensors turn on the appropriate level of light when needed and even alert you before lamps burn out. It also connects the badging system for unlocking doors and options for mobile security applications.

Information Security

Security is paramount when it comes to protecting student, staff, research, and project information. Distech Controls uses security measures that are above industry standards to help keep your data secure in both our hardware and software.

How Connected Building Solutions Help with **Innovation**

Smart Campus: API Integration

Create a smart campus with mobile-friendly applications for students to engage with campus services and features like room booking and wayfinding by connecting 3rd party software to building technology such as RESTful API, BACnet IP, and connected controllers.

How Connected Building Solutions Help with **Efficiency**

Space Utilization

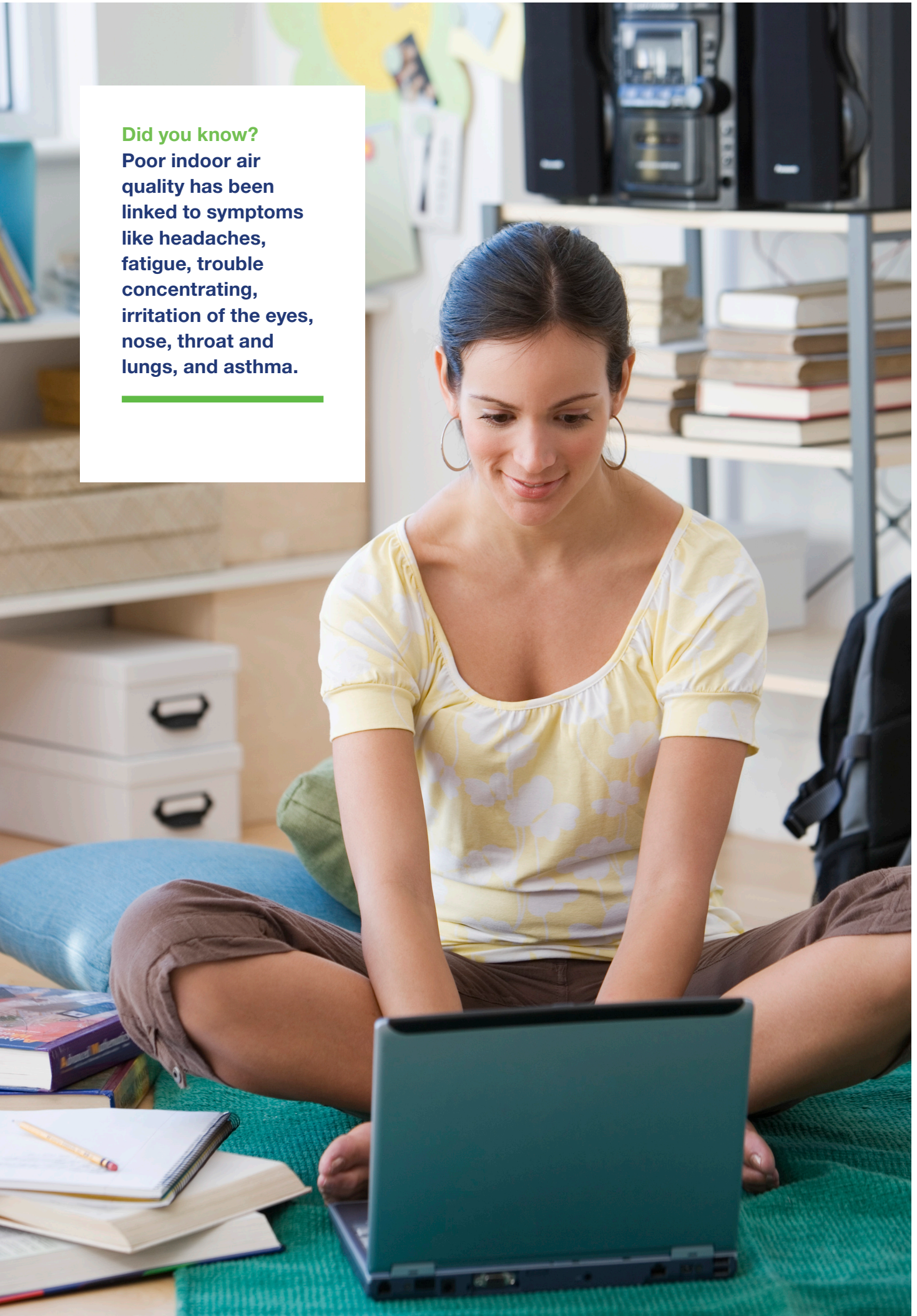
Many institutions feel and state that they are out of space however, the average utilization rate is between 46 and 67 percent. With BAS, facility managers have reliable data on space utilization, with easy to use dashboards, so they can manage their existing space more efficiently.

Energy Savings

Once your BAS has unified your systems, you can apply sophisticated controls that go beyond scheduling temperature set points for energy reduction and cost savings.

Did you know?

Poor indoor air quality has been linked to symptoms like headaches, fatigue, trouble concentrating, irritation of the eyes, nose, throat and lungs, and asthma.





Products



ECLYPSE Controller Series

Connected IP and wi-fi product series



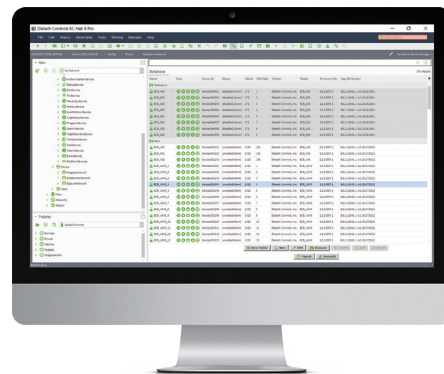
ENVISION

Responsive, web-based graphic design and visualization interface



Allure UNITOUCH and my PERSONIFY

State-of-the-art touchscreen user interface and mobile application



EC-Net

Web-based multi-protocol building automation and energy management platform

Connecting people with intelligent building solutions for better health, better spaces, better efficiencies.

Distech Controls has set the standard in the industry for innovative, cost-effective, and truly open building and energy management systems that help increase operational savings and sustainability throughout the life cycle of your facilities.

The following is a sample of colleges and universities shaping the future with Distech Controls' solutions:

- Stanford University, Stanford, CA, United States
- University of North Carolina at Greensboro, Greensboro, NC, United States
- Trinity International University Residence Hall, Deerfield, IL, United States
- University of Bologna, Forli, Italy
- University of Western Sydney (UWS) - Nirimba Campus, Blacktown, NSW, Australia
- University of Western Sydney (UWS) - Teaching Facility Upgrade, Parramatta, NSW, Australia
- Melbourne University, Bio 21 Research Facilities, Melbourne, Australia

And many more.

**DISTECH
CONTROLS™**

Contact our team today to learn how our solutions can improve operations and cost savings in your facilities.

www.distech-controls.com

sales@distech-controls.com

